



8 New Way

**makes use of the principle that
humans are visual animals, allowing teams to quickly learn
corporate management, enabling companies to leapfrog
and improve their management capabilities**

Wisage Technology Limited (Hong Kong)

📍 2702-6 Lucky Commercial Center 103-9 Des Voeux Road West ☎ +852-6919-6665



8 New Way makes use of the principle that humans are visual animals, allowing teams to quickly learn corporate management, enabling companies to leapfrog and improve their management capabilities.

8 New Way can provide you the following benefits:

Zero learning curve: **8 New Way** allows users to use simple pictures and words to represent their contents and **New Way** board columns to represent workflows and work-in-progress. Since learning it is a zero learning curve, a variety of users in your organization can learn this in no time.

Extreme versatility: The desire for operational efficiency is prompted by a need for adaptability. **8 New Way's** versatility enables all your employees to shift seamlessly between divisions, programs or projects, which helps your overall operation.

Increased visibility: **8 New Way** board serves as the fundamental building block of this strategy. Its objective is to demonstrate the steps required to bring a concept to reality.

Efficiency: It is not unusual to use additional resources to resolve the issue more efficiently. **8 New Way** takes a unique method, assisting you in increasing productivity while maximizing the use of existing resources.

Improved productivity: Higher efficiency inevitably results in additional benefits of productivity improvements. **8 New Way** increases your performance by focusing your attention from starting to finishing tasks.

Workload reduction: **8 New Way** uses Work In Progress (WIP) restrictions. When a WIP limitation is enforced, no new activities can be added to the current job until all current operations are completed, which helps everyone in remaining focused on the most critical work.

Collaboration: Using **8 New Way**, everyone is aware of how other parties are performing, which increases productivity. Additionally, it motivates team members to collaborate and look for ways to improve.

Increased accessibility to information: Using **8 New Way** is an efficient way to acquire organizational knowledge. **8 New Way** board collects and processes data from numerous staff members. This is advantageous for personnel who may lack a working knowledge of a more complicated approach.

By utilizing the above benefits of **8 New Way**, you can develop a sustained competitive advantage.

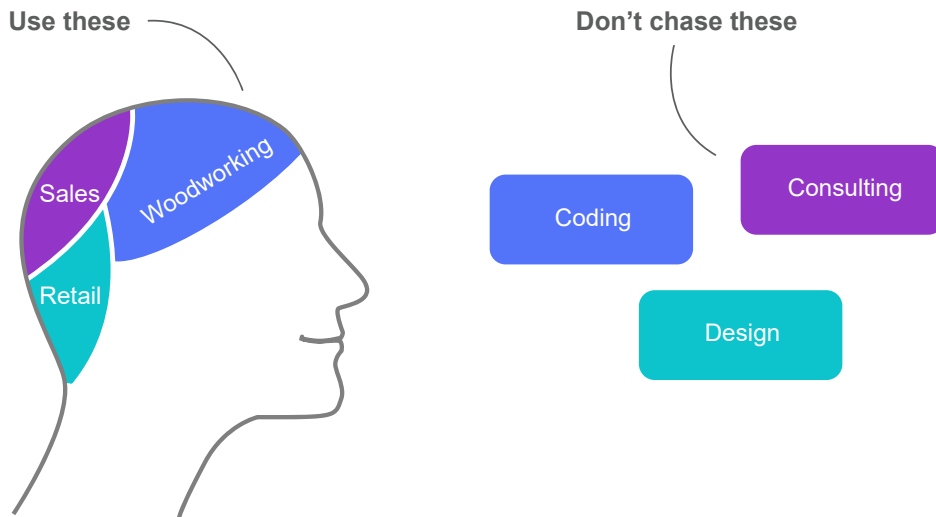
8 New Way Architecture

8 New Way architecture was designed to help users to visualize activities and responsibilities and manage schedules and progress of projects. An **8 New Way** project starts with a few columns (e.g., Requested", "In Progress" and "Done") defined in its type. When a **New Way** card is being added, it will be insert in the column according to its status. When constructed, managed and functioning properly, **8 New Way** serves as a real-time information repository, highlighting bottlenecks within the system and anything else which might get in the way of smooth working practices.

1. 4 New Way Principles

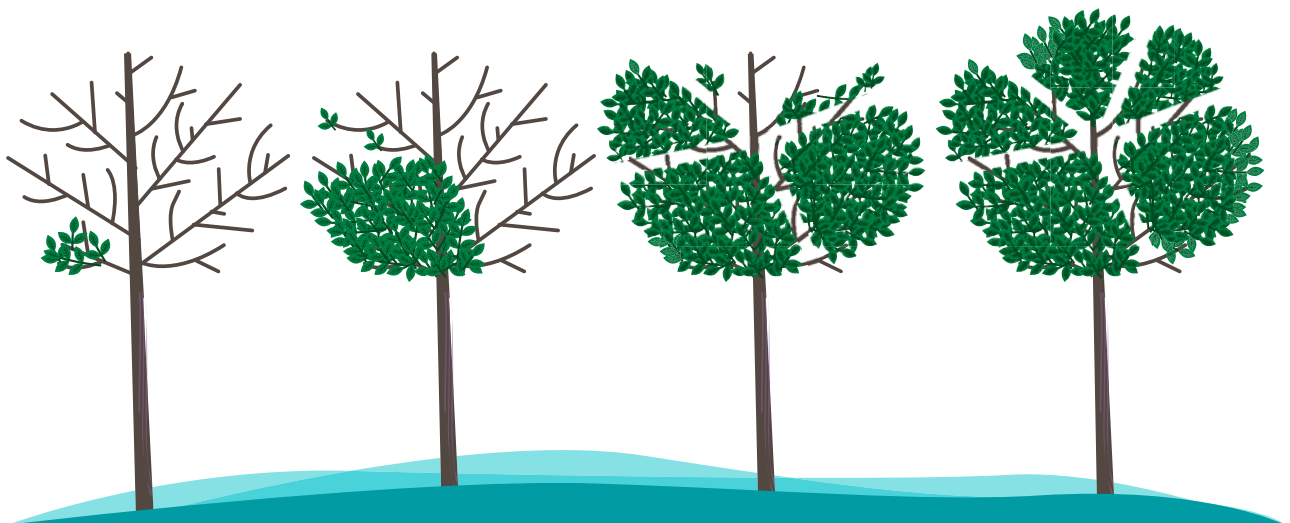
8 New Way supports the following 4 New Way principles:

Start With What You Do Now



New Way's flexibility allows it to be overlaid on existing workflows, systems and processes without disrupting what is already successfully being done; it will, naturally, highlight issues that need to be addressed and help to assess and plan changes so their implementation is as non-disruptive as possible. New Way's versatility allows it to be introduced incrementally, and sympathetically, to all types of organization without fear of over-commitment or 'culture shock'. This makes New Way easy to implement in any type of organization as there is no need for you to make sweeping changes right from the start.

Agree to Pursue Incremental Change



The New Way methodology is designed to meet minimal resistance and thus encourages continuous small incremental and evolutionary changes to the current process. In general, sweeping changes are discouraged because they usually encounter resistance due to fear or uncertainty.

Respect the Current Process, Roles & Responsibilities

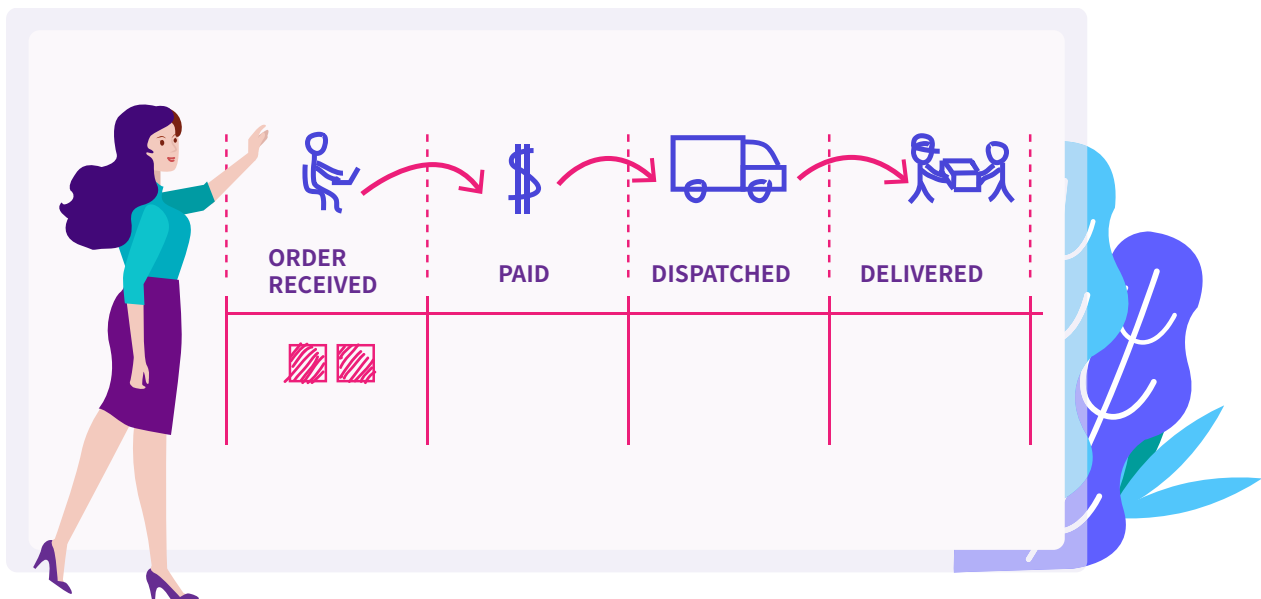
New Way recognizes that existing processes, roles, responsibilities, and titles have value and are, generally, worth preserving. The New Way method does not prohibit change, but neither does it prescribe it as a 'universal panacea'. It is designed to promote and encourage incremental, logical, changes without triggering a fear of change itself.

Encourage Acts of Leadership at All Levels

This is the newest New Way principle. It reminds you that some of the best leadership comes from everyday acts of people on the front line of their teams. It is important that everyone fosters a mindset of continuous improvement (Kaizen) in order to reach optimal performance on a team/department/company level. This can't be a management level activity.

2. 6 New Way Practices

Visualize the Workflow

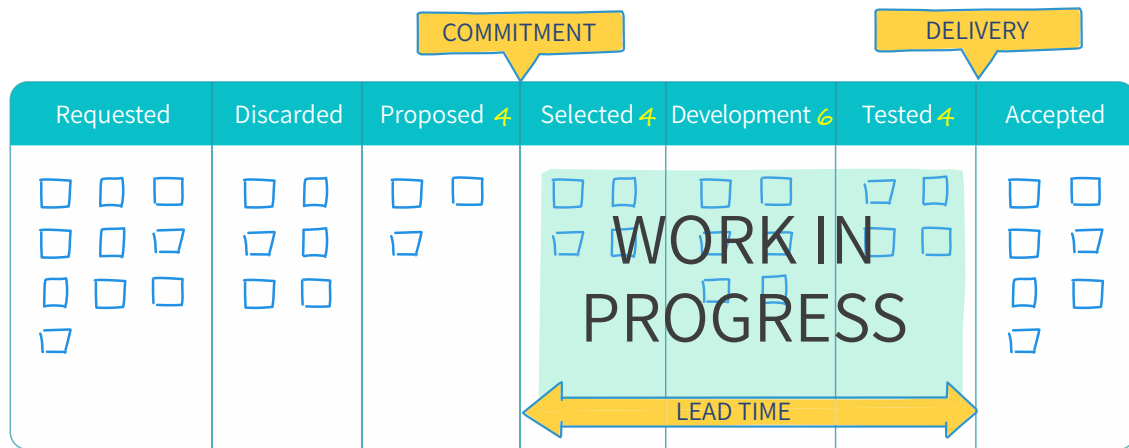


The first and most important thing for you is to understand what it takes to get an item from request to a deliverable product. Only after understanding how the flow of work currently functions can you aspire to improve it by making the necessary adjustments.

To visualize your process with a New Way system, you will need a board with cards and columns. Each column on the board represents a step in your workflow. Each New Way card represents a work item.

When you start working on item X, you pull it from the "To Do" column and when it is completed, you move it to "Done". This way you can easily track progress and spot bottlenecks.

Limit Work in Progress



Switching a team's focus halfway through will generally harm the process, and multi-tasking is a sure route to generating waste and inefficiency; a primary function of New Way is to ensure a manageable number of active items in progress at any one time. If there are no work-in-progress limits, you are not doing New Way.

Limiting WIP means that a pull system is implemented on parts or all of the workflow. Setting maximum items per stage ensures that a card is only "pulled" into the next step when there is available capacity. Such constraints will quickly illuminate problem areas in your flow so you can identify and resolve them.

Manage Flow

The whole idea of implementing a New Way system is to create a smooth healthy flow. By flow, we mean the movement of work items through the production process. We are interested in the speed and the smoothness of movement.

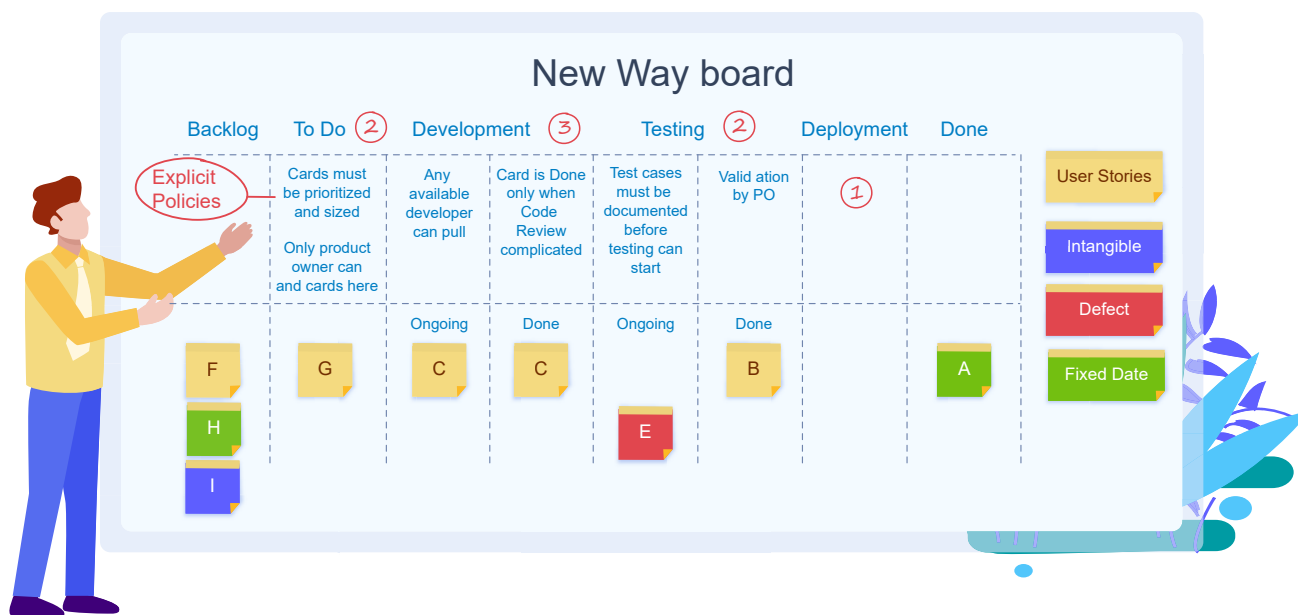
So, managing the flow is about managing the work but not the people. So instead of micro-managing people and trying to keep them busy all the time, we should focus on managing the work processes and understanding how to get that work through the system faster.

Ideally, we want fast and smooth flow. This would mean that our system is creating value quickly. This way we can minimize the average cycle time for production and avoid the cost of delay but in a predictable fashion.

Make Process Policies Explicit

You can't improve something you don't understand. This is why the process should be clearly defined, published and socialized. People would not associate and participate in something they do not believe would be useful.

When everyone is familiar with the common goal, they would be able to work and make decisions regarding a change that will move you in a positive direction.



Feedback Loops

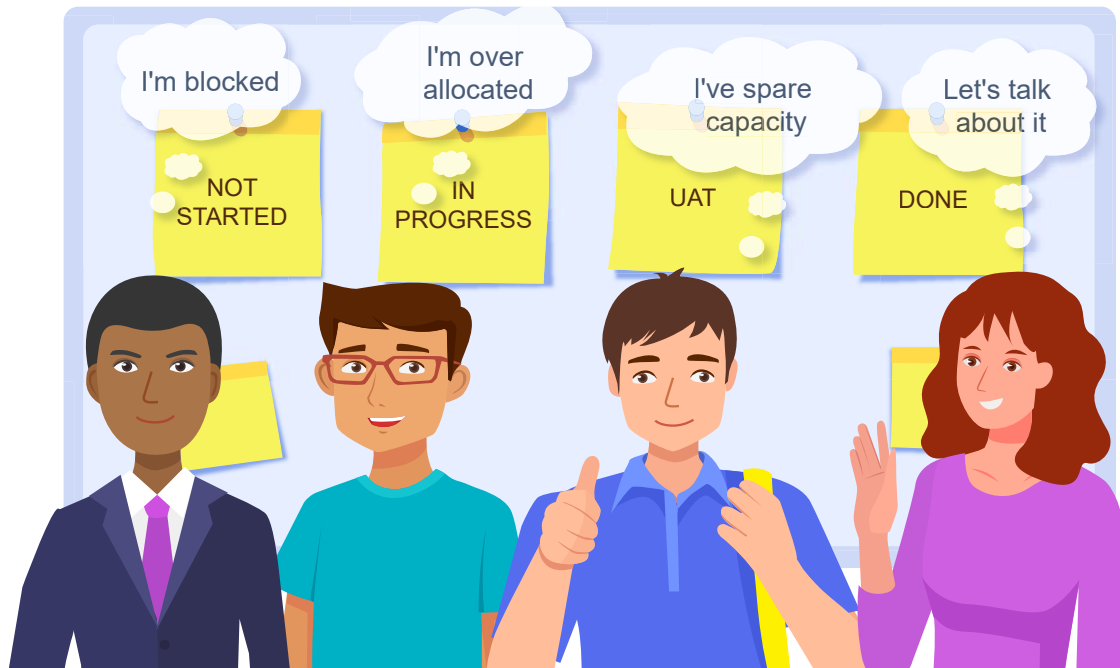
In order for the positive change to happen, succeed and continue, one more thing needs to be done. The Lean philosophy supports the assumption that regular meetings are necessary for knowledge transfer (feedback loops).

Such are the daily stand up meetings for team synchronization. They are held in front of the New Wayvv board and every member tells the others what he or she did the previous day and what will be doing today.

There are also the service delivery review, the operations review, and the risk review meeting. The frequency depends on many factors, but the idea is that they are regular, at a strictly fixed hour, straight to the point and never unnecessarily long.

The ideal average length of a stand up should be between 10-15 minutes, and others may reach up to an hour depending on the team size and topics.

Improve Collaboratively



The way to achieve continuous improvement and sustainable change within an organization is through shared vision of a better future and collective understanding of the issues that need to be overcome.

Teams that have a shared understanding of theories about work, workflow, process, and risk are more likely to build a shared comprehension of a problem and suggest steps towards improvement, which can be agreed by consensus.

New Way Feature List

Feature	Description
Kanban Mgmt	
Kanban	Allow creation of a new empty kanban board or a kanban board from a template.
	Support self-defined kanban type, kanban background picture and kanban grouping.
	Support association with groups and business types. (If you buy New Way and other product, you can get this function)
	Support to set who have the viewing privilege or have both the viewing and modification privileges.
	Allow to copy existing Kanban boards.
	Support saving a Kanban board as a Kanban template.
Card	Support to add cards to groups and record responsible persons, periods, complete % and tags.
	Support to add card images and set to only show card images.
	Support to set whether to show period, complete %, responsible person and tag in the card editing page.
	Cards can be dragged and dropped into different groups on demand.
Staff Portal	
Communication	Support corporate address book, announcements, discussion forums and chatting.
My Attention	Allow to view and handle work items from dashboard, and support personalized dashboard settings.
Profile & Delegate	Support personalized settings such as personal password, delegation, my menu etc.



8 can provide best combination of standard products & redevelopment services for enterprise management and over 500 corporations in Asia are using our following modules on-premises or SaaS:

8 SRM : Supplier Management, e-Procurement and e-Tender

8 PPM : Project and Portfolio Management

8 CRM : Corporate Client CRM and Consumer CRM

8 Timesheet : Resource Time and Cost Management

8 New Way : Visual Agile and Lean

8 Service : Service Management

8 EDMS : Electronic Document Management System

8 OA : Office Automation

8 HCM : Human Capital Management

8 All-in-one : Enterprise Full Automation